

Sawa Mounter Nozzle Cleaner

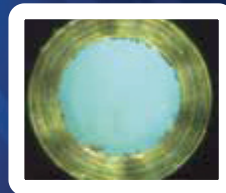
SC-EN20E SAWA ECO NOZZLE



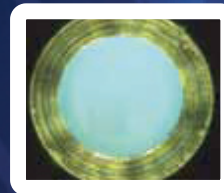
Cleans with Water!

Ultrasonically-vibrated water thoroughly passes through every nozzle opening. Double-cleaning power is generated with ultrasonic-energy cleaning and simultaneous vacuum suction. Nozzle tips and apertures can be cleaned without leaving any residue.

Before



After 10min. (Purified water)



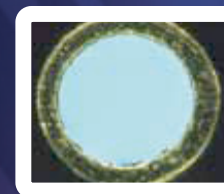
**CLEANS 20
NOZZLES AT
ONE TIME!**

Use purified water for normal cleaning conditions.

Before



After 5min. (SAWA Water)



Use SAWA Water for residues left for an extended period of time.

Sawa Eco-Nozzle works with the nozzle types below. For other models, please check with us.

Maker	Nozzle Image	Mounter Type
Panasonic		CM602 CM402 CM202
YAMAHA		YG200 YG200L
JUKI		FX-3 KE2050-2060

* Inner diameter of nozzle apertures should be less than 1mm.

Nozzle Pallet



We offer a wide range of nozzle holders to match most mounter manufacturers.



Specifications

Product No.	SC-EN20E
Outside Dimensions	19.02Wx18.98Dx15.16H in (483Wx482Dx385H mm)
Weight	33 lbs (15 kg)
Power	AC110V, 120V, 220V, 240V±10V 50/60Hz 30VA
Ultrasonic Spec.	40kHz 9W
Air	0.2MPa 170NL/min
Tank Capacity	1L
Cleaning Solvent	Purified water, SAWA Water (electrolytic alkaline water)
Cleaning/ Drying time	Cleaning time 5min./ 10min. Drying time 5min.